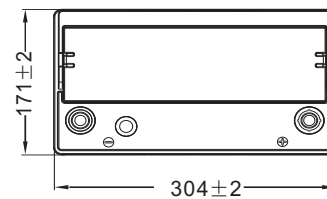
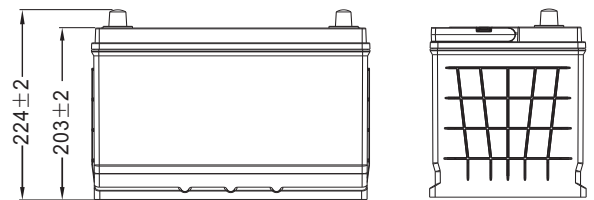


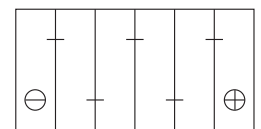
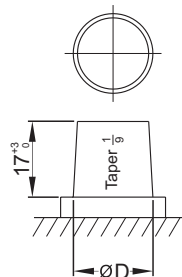
### Physical Specification (mm)

Nominal Voltage		12V
Nominal Capacity(20HR)		80Ah
Dimension	Length	304 ± 2mm(11.96inches)
	Width	171 ± 2mm(6.73inches)
	Container Height	203 ± 2mm(7.99inches)
	Total Height(with Terminal)	224 ± 2mm(8.82inches)
Weight With Acid		Approx 20.4Kg(45.0lbs)
Acid		1.280 ± 0.015g/cm <sup>3</sup> (25°C)
Standard Terminal		1
Cell layout		0
Hold-Down		B1
Case		Black-Material (PP)
Cover		Black-Material (PP)
Handle		Black-Material (PP)

### Dimensions (mm)



### Cell Layout



Figure(0)

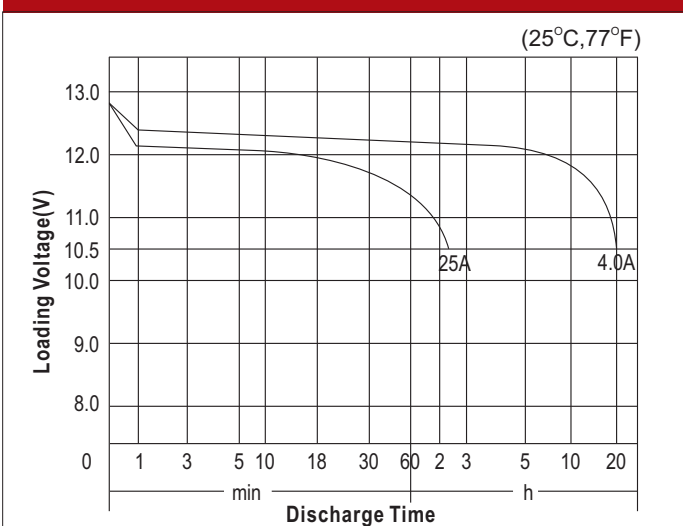
### Electrical Specification

Rated Capacity	20 hour rate(4.0A)	80Ah
Reserve Capacity (RC)25A@10.5V		138min
Cold Cranking Performance Amps(CCA) @0°F(-18°C)		660A(JIS)

### Standard Terminal (mm)

Terminal Type	D	
	Positive	Negative
1	19.5 <sup>0</sup> <sub>-0.3</sub>	17.9 <sup>0</sup> <sub>-0.3</sub>

### Discharge Characteristics



### Discharge Characteristics

