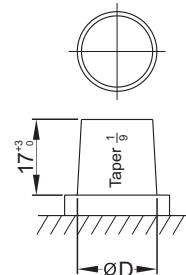
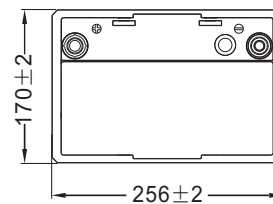
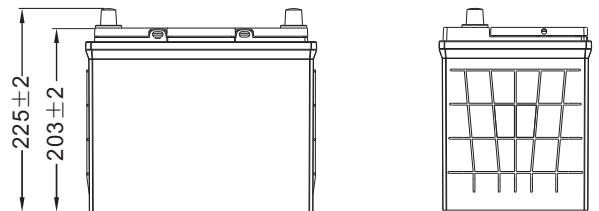


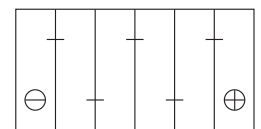
Physical Specification (mm)

Nominal Voltage		12V
Nominal Capacity(20HR)		70Ah
Dimension	Length	256±2mm(10.08inches)
	Width	170±2mm(6.69inches)
	Container Height	203±2mm(7.99inches)
	Total Height(with Terminal)	225±2mm(8.86inches)
Weight With Acid		Approx 17.5Kg(38.6lbs)
Acid		1.280±0.015g/cm ³ (25°C)
Standard Terminal		1
Cell layout		0
Hold-Down		B0
Case		Black-Material (PP)
Cover		Black-Material (PP)
Handle		Black-Material (PP)

Dimensions (mm)



Cell Layout



Figure(0)

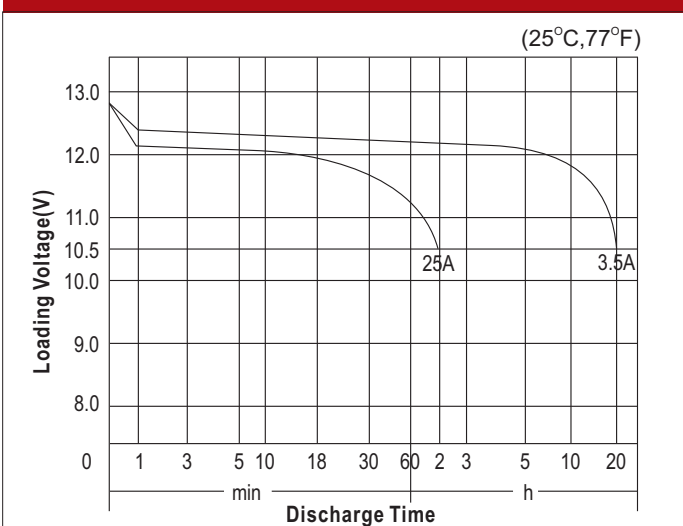
Electrical Specification

Rated Capacity	20 hour rate(3.5A)	70Ah
Reserve Capacity (RC)25A@10.5V		118min
Cold Cranking Performance Amps(CCA) @0°F(-18°C)		620A(JIS)

Standard Terminal (mm)

Terminal Type	D	
	Positive	Negative
1	19.5 ⁰ _{-0.3}	17.9 ⁰ _{-0.3}

Discharge Characteristics



Discharge Characteristics

