

Physical Specification (mm)

Nominal Voltage		12V
Nominal Capacity(20HR)		45Ah
Dimension	Length	236 ± 2mm(9.33inches)
	Width	128 ± 2mm(5.04inches)
	Container Height	200 ± 2mm(7.87inches)
	Total Height(with Terminal)	222 ± 2mm(8.74inches)
Weight With Acid		Approx 12.1Kg(26.7lbs)
Acid		1.280 ± 0.015g/cm ³ (25°C)
Standard Terminal		3
Cell layout		1
Hold-Down		B0
Case		Black-Material (PP)
Cover		Black-Material (PP)
Handle		Black-Material (PP)

Electrical Specification

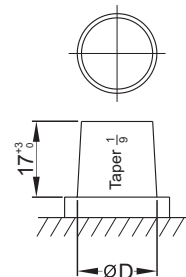
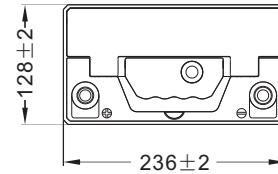
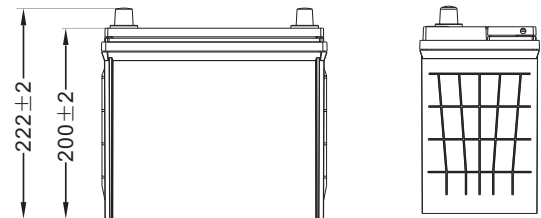
Rated Capacity	20 hour rate(2.25A)	45Ah
Reserve Capacity (RC)25A@10.5V		70min
Cold Cranking Performance Amps(CCA) @0°F(-18°C)		350A(JIS)

Standard Terminal (mm)

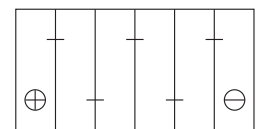
Terminal Type	D	
	Positive	Negative
3	14.7 ⁰ _{-0.3}	13.0 ⁰ _{-0.3}



Dimensions (mm)

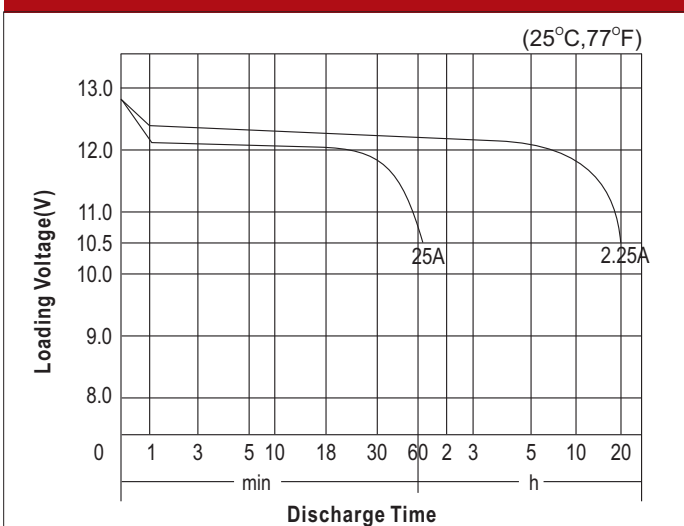


Cell Layout



Figure(1)

Discharge Characteristics



Discharge Characteristics

