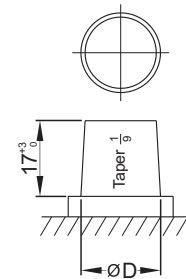
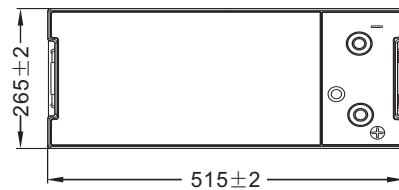
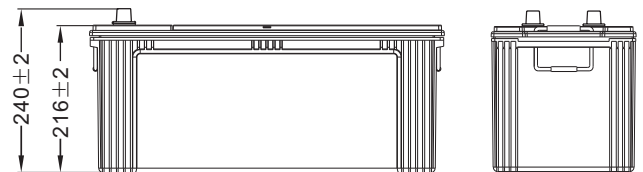


Physical Specification (mm)

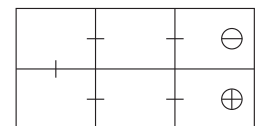
Nominal Voltage		12V
Nominal Capacity(20HR)		200Ah
Dimension	Length	515±2mm(20.28inches)
	Width	265±2mm(10.43inches)
	Container Height	216±2mm(8.50inches)
	Total Height(with Terminal)	240±2mm(9.45inches)
Weight With Acid		Approx 51.3Kg(113.1lbs)
Acid		1.280±0.015g/cm ³ (25°C)
Standard Terminal		1
Cell layout		3
Hold-Down		B0
Case		Black-Material (PP)
Cover		Black-Material (PP)
Handle		Black-Material (Nylon)



Dimensions (mm)



Cell Layout



Figure(3)

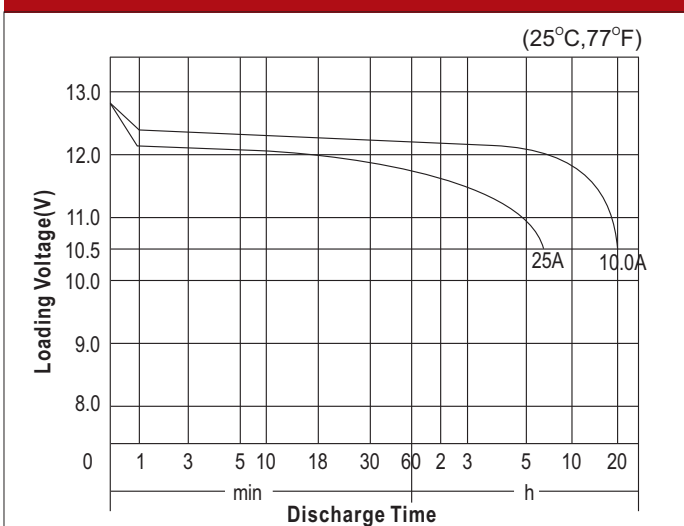
Electrical Specification

Rated Capacity	20 hour rate(10.0A)	200Ah
Reserve Capacity (RC)25A@10.5V		407min
Cold Cranking Performance Amps(CCA) @0°F(-18°C)		1100(JIS)

Standard Terminal (mm)

Terminal Type	D	
	Positive	Negative
1	19.5 ⁰ _{-0.3}	17.9 ⁰ _{-0.3}

Discharge Characteristics



Discharge Characteristics

