

Physical Specification (mm)

Nominal Voltage		12V
Nominal Capacity(20HR)		55Ah
Dimension	Length	242 ± 2mm(9.53inches)
	Width	173 ± 2mm(6.81inches)
	Container Height	190 ± 2mm(7.48inches)
	Total Height(with Terminal)	190 ± 2mm(7.48inches)
Weight With Acid		Approx 14.9Kg(32.8lbs)
Acid		1.280 ± 0.015g/cm ³ (25°C)
Standard Terminal		1
Cell layout		0
Hold-Down		B13
Case		Black-Material (PP)
Cover		Black-Material (PP)
Handle		Black-Material (PP)

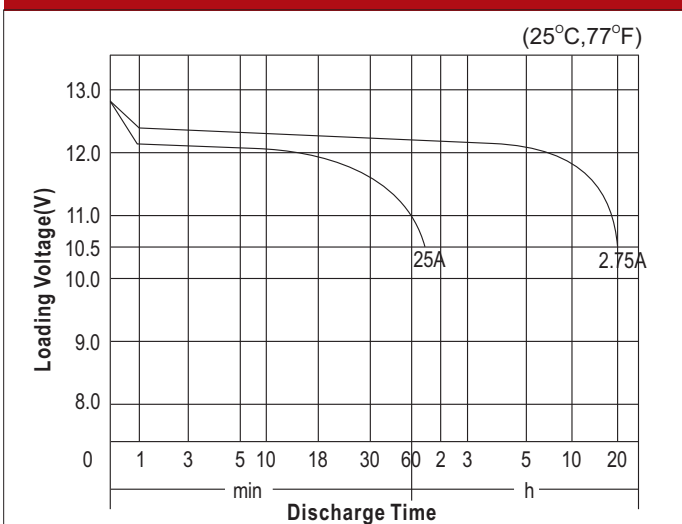
Electrical Specification

Rated Capacity	20 hour rate(2.75A)	55Ah
Reserve Capacity (25A@10.5V)		88min
Cold Cranking Performance Amps(CCA) @0°F(-18°C)		450A(EN)

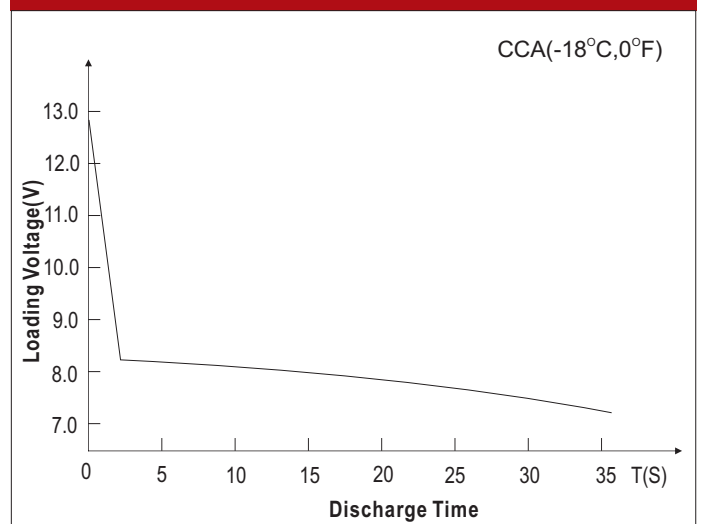
Standard Terminal (mm)

Terminal Type	D	
	Positive	Negative
1	19.5 ⁰ _{-0.3}	17.9 ⁰ _{-0.3}

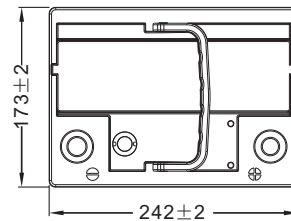
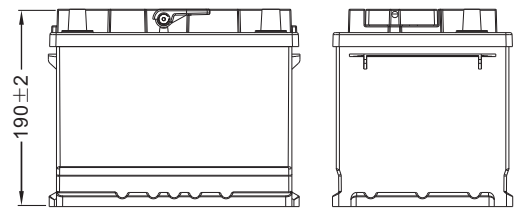
Discharge Characteristics



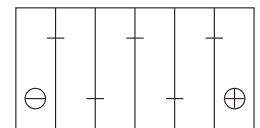
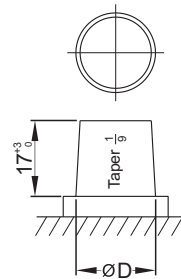
Discharge Characteristics



Dimensions (mm)



Cell Layout



Figure(0)