

Physical Specification (mm)

Nominal Voltage		12V
Nominal Capacity(20HR)		43Ah
Dimension	Length	206 ± 2mm(8.11inches)
	Width	174 ± 2mm(6.85inches)
	Container Height	173 ± 2mm(6.81inches)
	Total Height(with Terminal)	173 ± 2mm(6.81inches)
Weight With Acid		Approx 11.9Kg(26.2lbs)
Acid		1.280 ± 0.015g/cm ³ (25°C)
Standard Terminal		1
Cell layout		0
Hold-Down		B13
Case		Black-Material (PP)
Cover		Black-Material (PP)
Handle		Black-Material (PP)

Electrical Specification

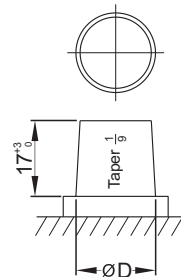
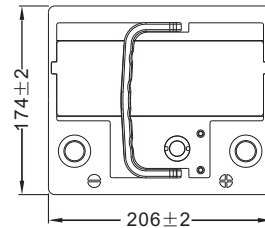
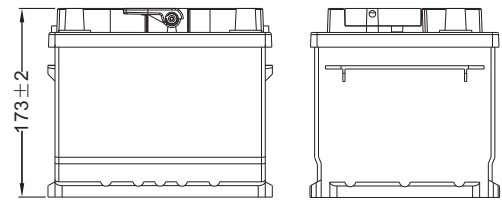
Rated Capacity	20 hour rate(2.15A)	43Ah
Reserve Capacity (25A@10.5V)		66min
Cold Cranking Performance Amps(CCA) @0°F(-18°C)		350A(EN)

Standard Terminal (mm)

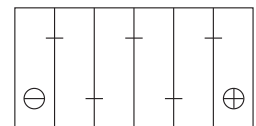
Terminal Type	D	
	Positive	Negative
1	19.5 ⁰ _{-0.3}	17.9 ⁰ _{-0.3}



Dimensions (mm)

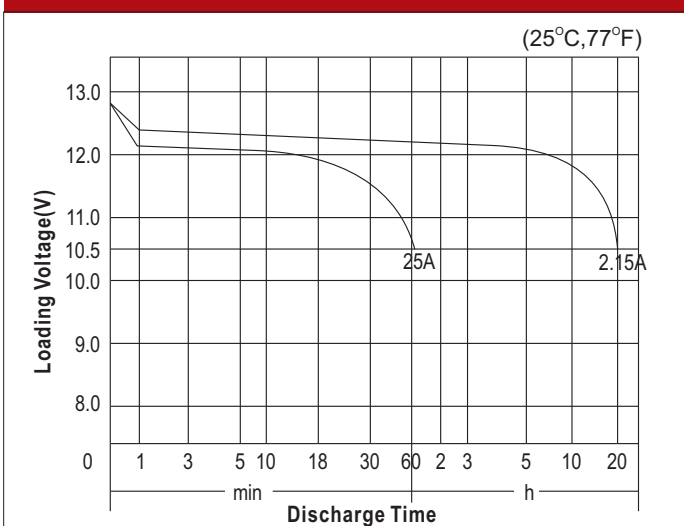


Cell Layout



Figure(0)

Discharge Characteristics



Discharge Characteristics

