

Physical Specification (mm)

Nominal Voltage		12V
Nominal Capacity(20HR)		36Ah
Dimension	Length	206 ± 2mm(8.11inches)
	Width	174 ± 2mm(6.85inches)
	Container Height	173 ± 2mm(6.81inches)
	Total Height(with Terminal)	173 ± 2mm(6.81inches)
Weight With Acid		Approx 10.8Kg(23.8lbs)
Acid		1.280 ± 0.015g/cm ³ (25°C)
Standard Terminal		1
Cell layout		0
Hold-Down		B13
Case		Black-Material (PP)
Cover		Black-Material (PP)
Handle		Black-Material (PP)

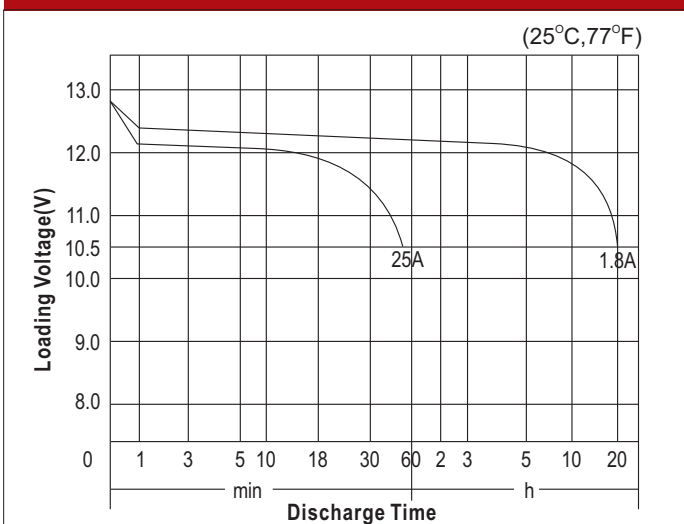
Electrical Specification

Rated Capacity	20 hour rate(1.8A)	36Ah
Reserve Capacity (25A@10.5V)		54min
Cold Cranking Performance Amps(CCA) @0°F(-18°C)		320A(EN)

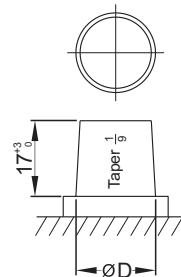
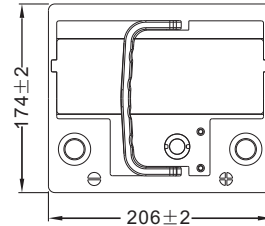
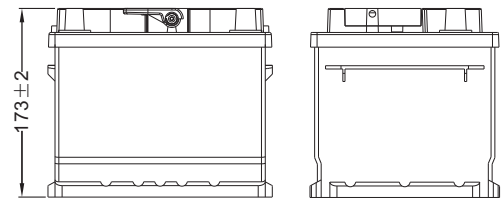
Standard Terminal (mm)

Terminal Type	D	
	Positive	Negative
1	19.5 ⁰ _{-0.3}	17.9 ⁰ _{-0.3}

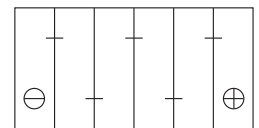
Discharge Characteristics



Dimensions (mm)



Cell Layout



Figure(0)

Discharge Characteristics

