

### Physical Specification (mm)

Nominal Voltage		12V
Nominal Capacity(20HR)		88Ah
Dimension	Length	351±2mm(13.82inches)
	Width	174±2mm(6.85inches)
	Container Height	188±2mm(7.40inches)
	Total Height(with Terminal)	188±2mm(7.40inches)
Weight With Acid		Approx 22.6Kg(49.8lbs)
Acid		1.280±0.015g/cm <sup>3</sup> (25°C)
Standard Terminal		1
Cell layout		0
Hold-Down		B13
Case		Black-Material (PP)
Cover		Black-Material (PP)
Handle		Black-Material (PP)

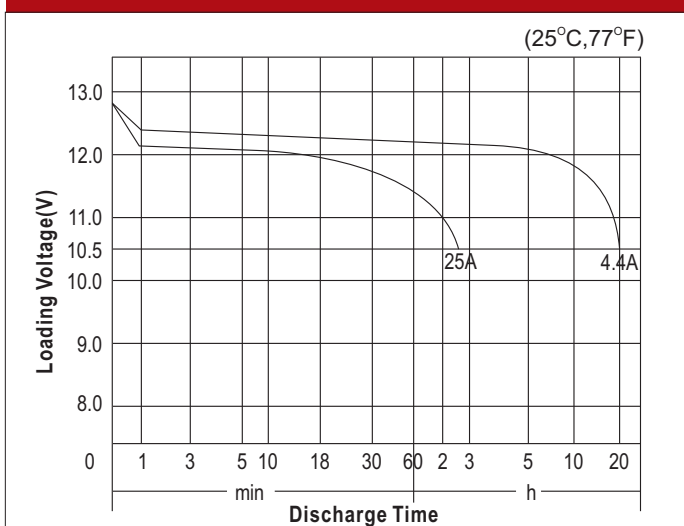
### Electrical Specification

Rated Capacity	20 hour rate(4.4A)	88Ah
Reserve Capacity (RC)25A@10.5V		154min
Cold Cranking Performance Amps(CCA) @0°F(-18°C)		730A(BCI)

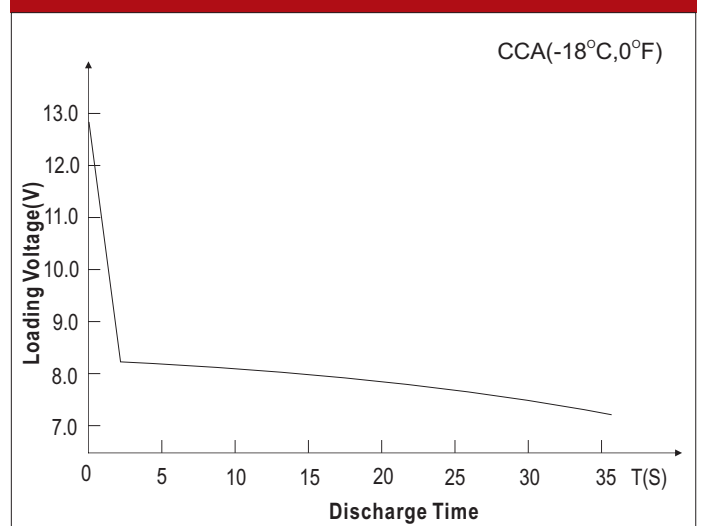
### Standard Terminal (mm)

Terminal Type	D	
	Positive	Negative
1	19.5 <sup>0</sup> <sub>-0.3</sub>	17.9 <sup>0</sup> <sub>-0.3</sub>

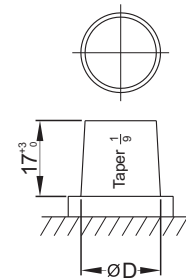
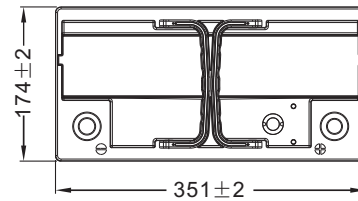
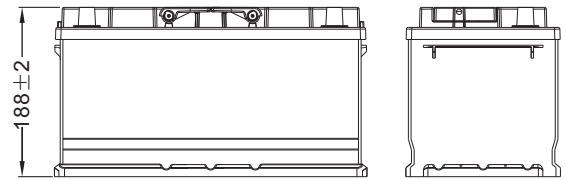
### Discharge Characteristics



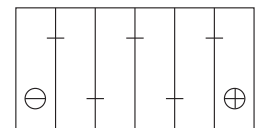
### Discharge Characteristics



### Dimensions (mm)



### Cell Layout



Figure(0)