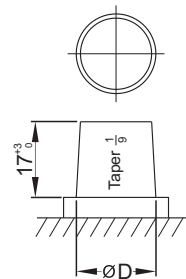
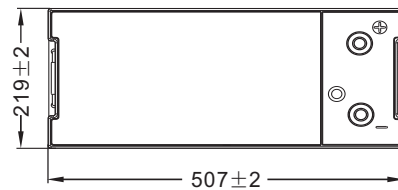
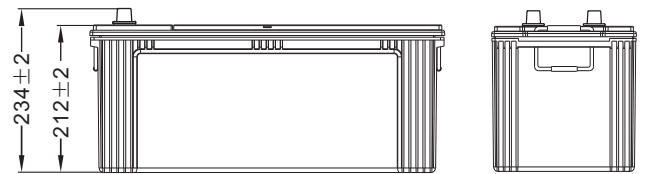


### Physical Specification (mm)

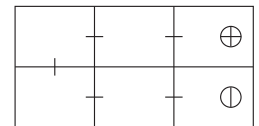
Nominal Voltage		12V
Nominal Capacity(20HR)		150Ah
Dimension	Length	507±2mm(19.96inches)
	Width	219±2mm(8.62inches)
	Container Height	212±2mm(8.35inches)
	Total Height(with Terminal)	234±2mm(9.21inches)
Weight With Acid		Approx 39.5Kg(87.1lbs)
Acid		1.280±0.015g/cm <sup>3</sup> (25°C)
Standard Terminal		1
Cell layout		4
Hold-Down		B0
Case		Black-Material (PP)
Cover		Black-Material (PP)
Handle		Black-Material (Nylon)



### Dimensions (mm)



### Cell Layout



Figure(4)

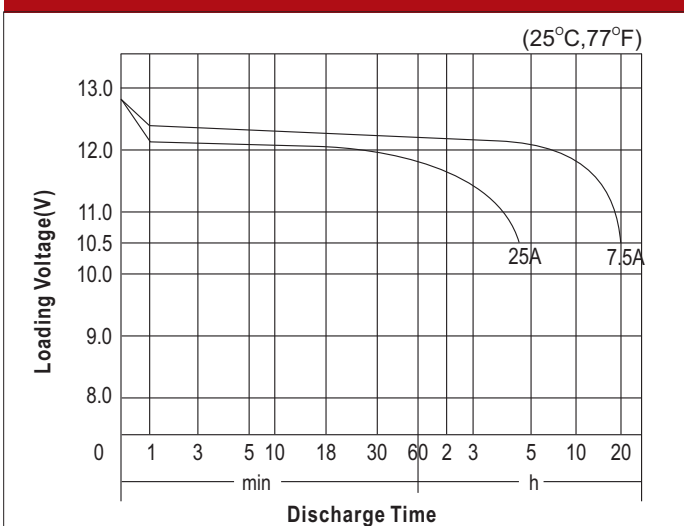
### Electrical Specification

Rated Capacity	20 hour rate(7.5A)	150Ah
Reserve Capacity (RC)25A@10.5V		290min
Cold Cranking Performance Amps(CCA) @0°F(-18°C)		900A(SAE)

### Standard Terminal (mm)

Terminal Type	D	
	Positive	Negative
1	19.5 <sup>0</sup> <sub>-0.3</sub>	17.9 <sup>0</sup> <sub>-0.3</sub>

### Discharge Characteristics



### Discharge Characteristics

