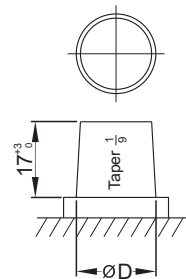
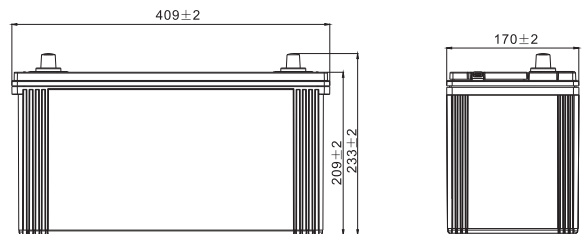


### Physical Specification (mm)

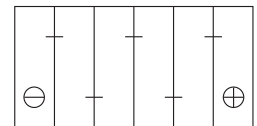
Nominal Voltage		12V
Nominal Capacity(20HR)		100Ah
Dimension	Length	409±2mm(16.10inches)
	Width	170±2mm(6.69inches)
	Container Height	209±2mm(8.23inches)
	Total Height(with Terminal)	233±2mm(9.17inches)
Weight With Acid		Approx 26.3Kg(58.0lbs)
Acid		1.280±0.015g/cm <sup>3</sup> (25°C)
Standard Terminal		1
Cell layout		0
Hold-Down		B0
Case		Black-Material (PP)
Cover		Black-Material (PP)
Handle		Black-Material (Nylon)



### Dimensions (mm)



### Cell Layout



Figure(0)

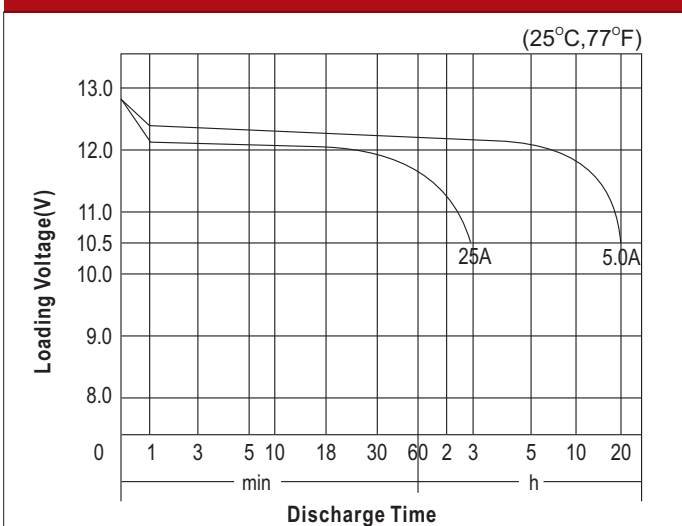
### Electrical Specification

Rated Capacity	20 hour rate(5.0A)	100Ah
Reserve Capacity (RC)25A@10.5V		179min
Cold Cranking Performance Amps(CCA) @0°F(-18°C)		750A(SAE)

### Standard Terminal (mm)

Terminal Type	D	
	Positive	Negative
1	19.5 <sup>0</sup> <sub>-0.3</sub>	17.9 <sup>0</sup> <sub>-0.3</sub>

### Discharge Characteristics



### Discharge Characteristics

